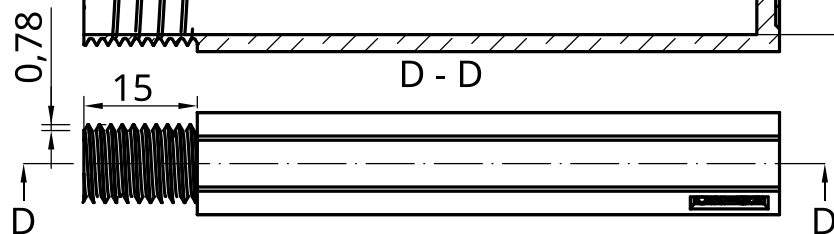


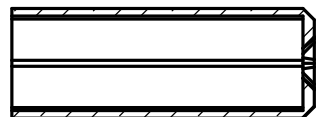
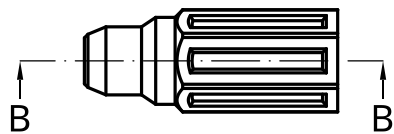
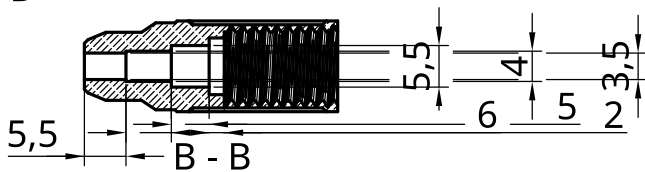
A - A



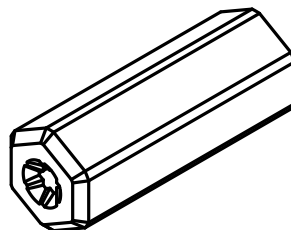
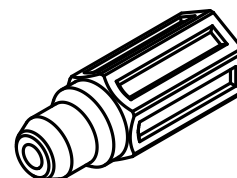
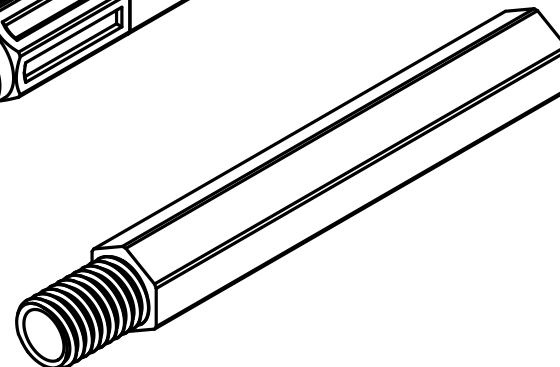
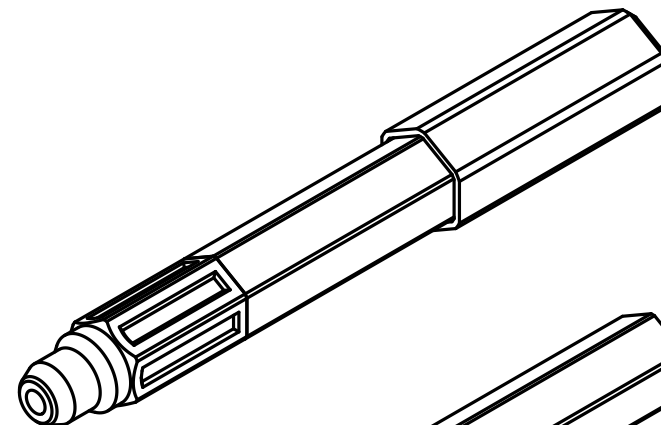
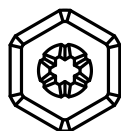
D - D

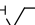
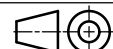


B - B



C - C



UNLESS OTHERWISE SPECIFIED, DIMENSIONS ARE IN MILLIMETERS ANGULAR = ± ° SURFACE FINISH  DO NOT SCALE DRAWING BREAK ALL SHARP EDGES AND REMOVE BURRS FIRST ANGLE PROJECTION 		NAME	SIGNATURE	DATE	TITLE ON-G2		
	DRAWN	LOUIS DALIBARD		2024-11-17			
	CHECKED						
	APPROVED				SIZE A4		
	MATERIAL	FINISH			DWG NO.	REV 2	
	SCALE 1:1	WEIGHT			SHEET 1 of 1		